

5 l, 10 l or 15 l Glass Reactor



- Exchangeable glass bottom with one DN200 lid
 - Profibus/-net plug in connection
 - Slim and space-saving frame design
- GMP prepared

Technical data

Dimension one plant (W x D x H)	570 x 570 x 2383 mm
Weight one plant	168 kg including
Electrical supply	230 V / 50 Hz / 13 A
Power	3 kW
Ambient conditions	10 to 40°C, max. humidity at 40°C: < 80%
Pressure conditions	vacuum up to 0.3 bar
Temperature conditions	-20 - 100°C
Reactor type	stirred glass reactors (5 l, 10 l or 15 l) adapted off lid (DN200) - compatible
Pump	0.001 to 2900 ml/min
Stirrer speed	400 rpm
Temperature and level measurement	PT100 and photoelectric proximity switch



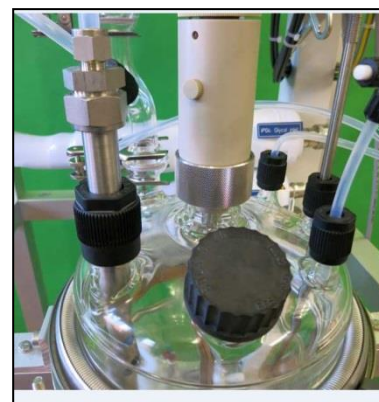
Cooler



Double head peristaltic pump



Glass connector



Lid with 9 connections

AP-Miniplant turn-key research plants are used for:

- Absorption, Adsorption, Extraction
- Reactive distillation, Distillation, Rectification, Evaporator, Humidification
- Precipitation, Stirred Reactor, Dryer, Mixer, Filter
- Polymerization Reactor, Polycondensation, Gas Phase Polymerization
- Catalyst Test System, Fixed Bed Reactor, High Temperature Furnace
- Training Plant, Container Unit, Gas, Liquid and Solid Dosing



AP-Miniplant GmbH & Co. KG

Hirtenrasen 64
D-37318 Lindewerra

Phone: +49 (0) 36087 976-0
Fax: +49 (0) 36087 976-22

Email: info@miniplant.de
Internet: www.miniplant.de