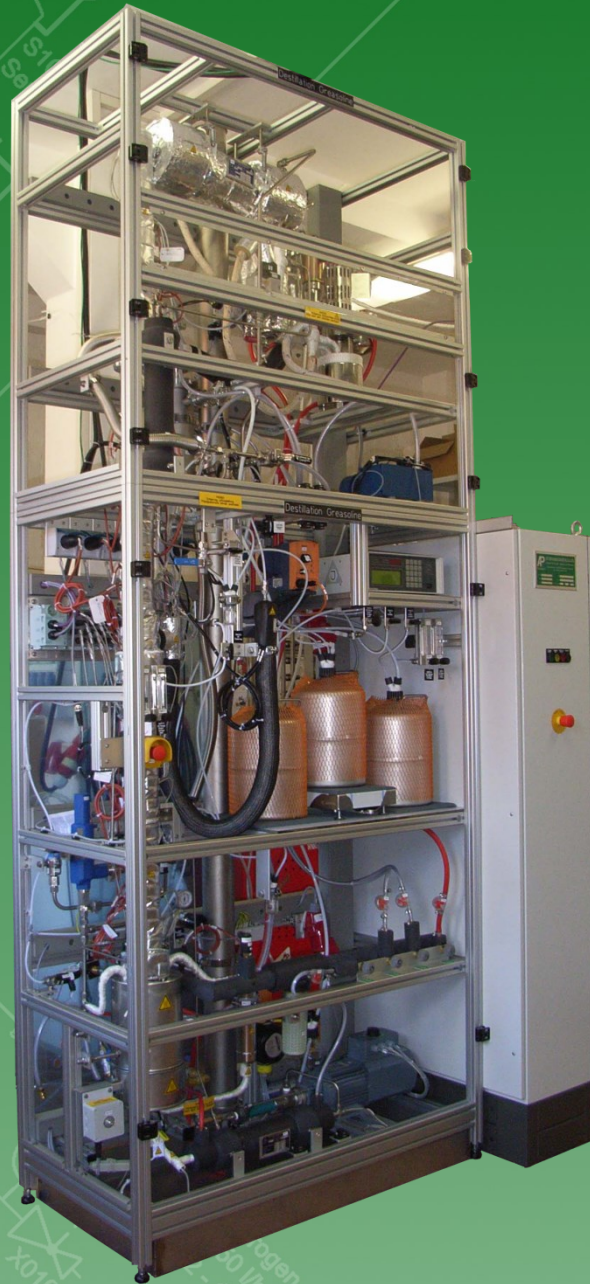
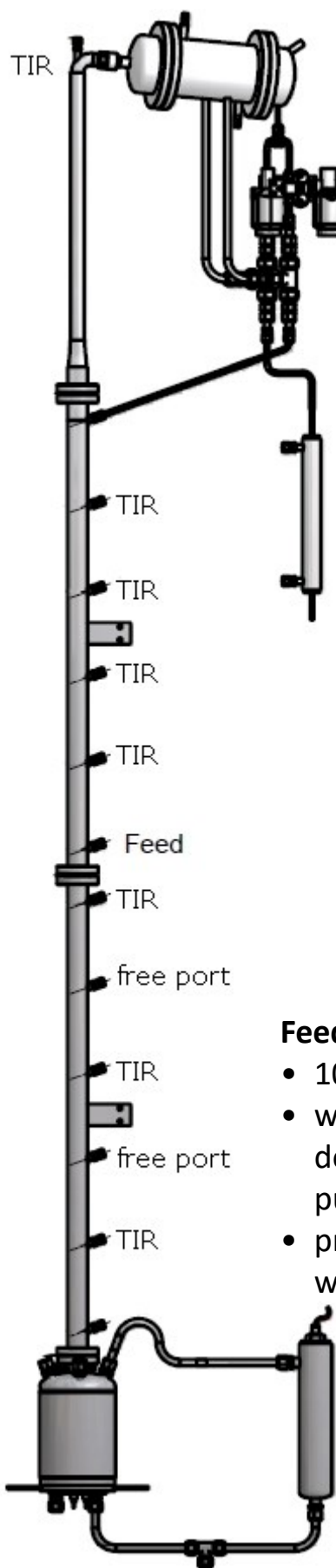


Distillation Plant



- **Stainless steel column DN 30**
- **Temperatures up to 350 °C, vacuum suitable**
- **Housing and supervision of toxic or explosive gas**
- **Industrial control system: Fully automated**



Destillation column

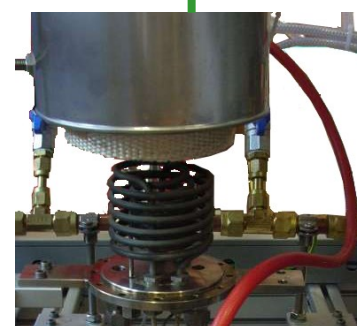
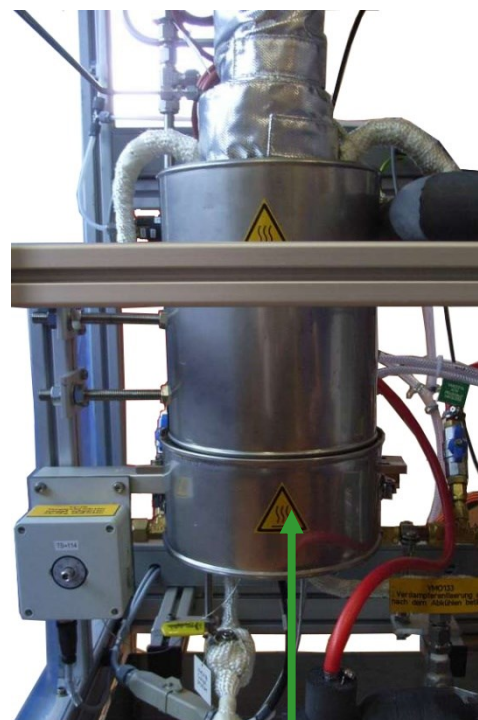
- with temperature and feed ports,
- DN 30,
- 5 heating jackets & 8 temperature sensors,
- design temperature 350°C,
- inertisation with nitrogen,
- reflux divider,
- sampling point for bottom and overhead product

Evaporator

- 4 kW electrical power,
- liquid level sensor to protect the evaporator from running empty,
- safety valve set to 0.4 bar,
- operation with temperature or power setting

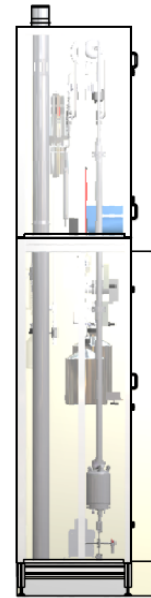
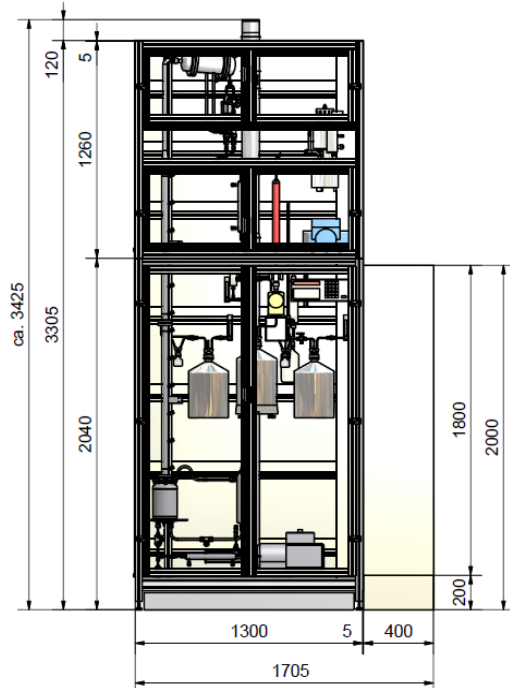
Feed dosing

- 10 l feed vessel,
- weight controlled dosing with membrane pump,
- preheated feed line with heating hose

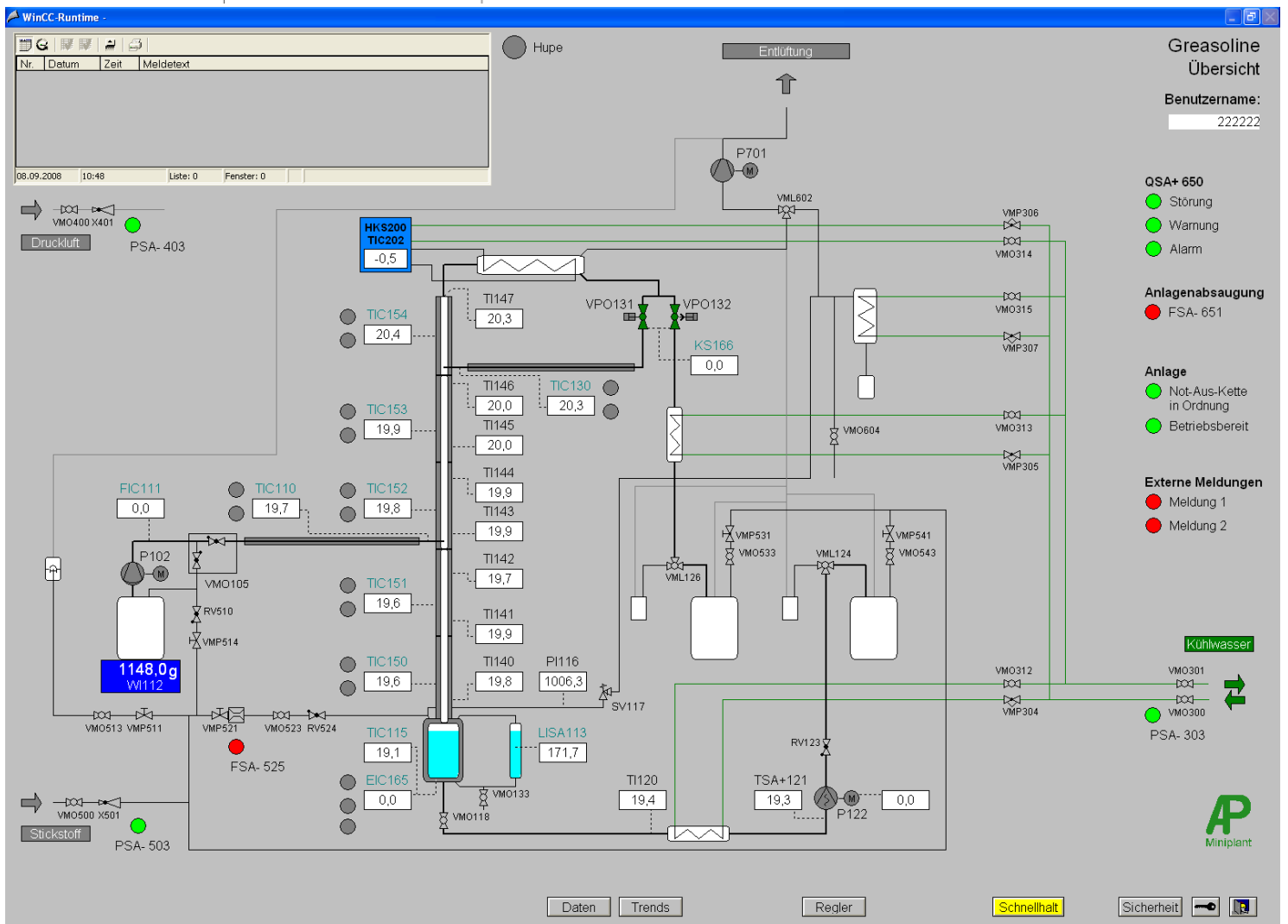
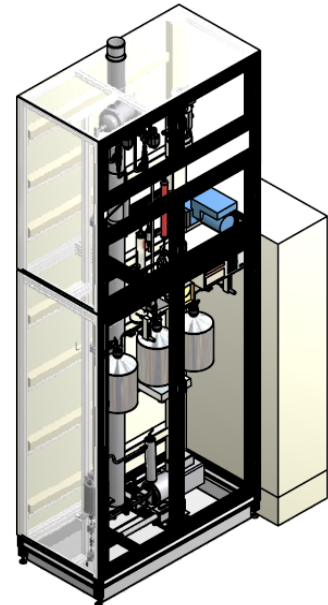


lower part of evaporator unit with heat exchanger





3-D view



control system:operating screen

Technical Data

Dimension plant W x D x H	1705 mm x 800 mm x 3305 mm
Mass of the unit without computer + spares	640 kg
Power	17.5 kW
Electrical supply	3 x N/PE 230/400V AC, 50Hz
Main fuse	32 A
Ambient temperature range	10 to 40 °C
Max. humidity	< 80 %
Feed volume	10 l
Electric power evaporator	4 kW
Safety valve	0.4 bar
Evaporator volume	2 l
Evaporator level supervision	Liquid level measurement, 15 mm raster

AP-Miniplant turn-key research plants are used for:

- Absorption, Adsorption, Extraction
- Reactive distillation. Distillation, Rectification, Evaporator, Humidification
- Precipitation, Stirred Reactor, Dryer, Mixer, Filter
- Polymerization Reactor, Polycondensation, Gas Phase Polymerization
- Catalyst Test System, Fixed Bed Reactor, High Temperature Furnace
- Training Plant, Container Unit, Gas, Liquid and Solid Dosing



Smart Solutions for Small Plants

AP-Miniplant GmbH & Co. KG

Hirtenrasen 64

D-37318 Lindewerra

Phone: +49 (0) 36087 976-0

Fax: +49 (0) 36087 976-22

Email: info@miniplant.de

Internet: www.miniplant.de